

Restaurant & Catering Opportunity



400 Benedict Avenue, Tarrytown, Westchester New York

For Private Showing Call:
Paul G. W. Fetscher CCIM, SCLS
Great American Brokerage
(516) 889-7200 Paul@RestaurantExpert.com
www.RestaurantExpert.com
Licensed Real Estate Broker

Please Be Discreet
Do Not Speak to Anyone
On Premises

All information is from sources deemed reliable.
Offerings are made subject to errors, omissions,
prior acceptance and withdrawal without notice



EQUUS Restaurant & Catering is located
within the **Castle Hotel & Spa**
300 Benedict Ave., Tarrytown NY

Castle HOTEL & SPA
TARRYTOWN NEW YORK®





The top of the Castle is the highest point in Westchester County.

The Castle was constructed in the 19th century in the style of a Norman Castle on the Scottish frontier. It originally was used as a private residence of the Harold Carroll family. The family resided there until 1940. In 1941, Emerson and Ruth Axe bought The Castle for \$45,000. During World II, the castle tower was used as a sighting and listening post.





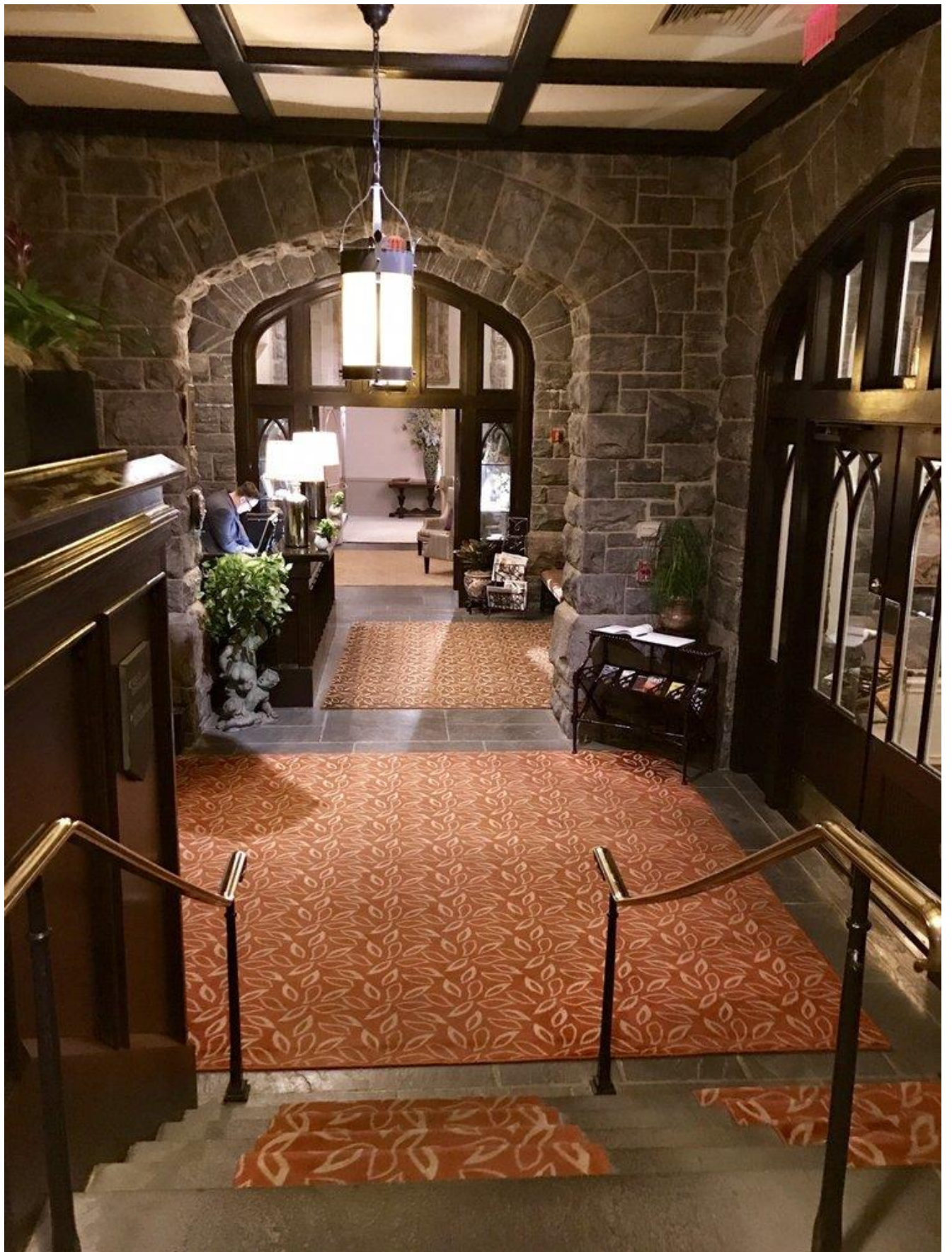
The Hotel & Spa consist of 35 guest rooms plus the spa facilities. The Food & Beverage facilities cover 10,000 SF on two levels. They include several dining areas along with two catering rooms for 120





Main Entrance Serves Both the Hotel and Restaurant & Catering







Front Desk





**Main Ballroom
for 120**





Second Ballroom Also Holds 120 Guests





**Features are
Available for
Dramatic Effects**



The Grounds are Suitable for Elegant Events







Several Dining Areas Provide Flexibility





Elegant Dining for Breakfast, Lunch or Dinner





Terrace Dining Overlooking the Hudson Valley





**Touches of Elegance
Throughout the
Property**



Large Sunny Room is Ideal for Breakfast & Lunches





Full Service and Service Bars





Large Wine Cellar





Complete Pastry Kitchen



Showplace Kitchen





Spacious Kitchen with State of the Art Equipment

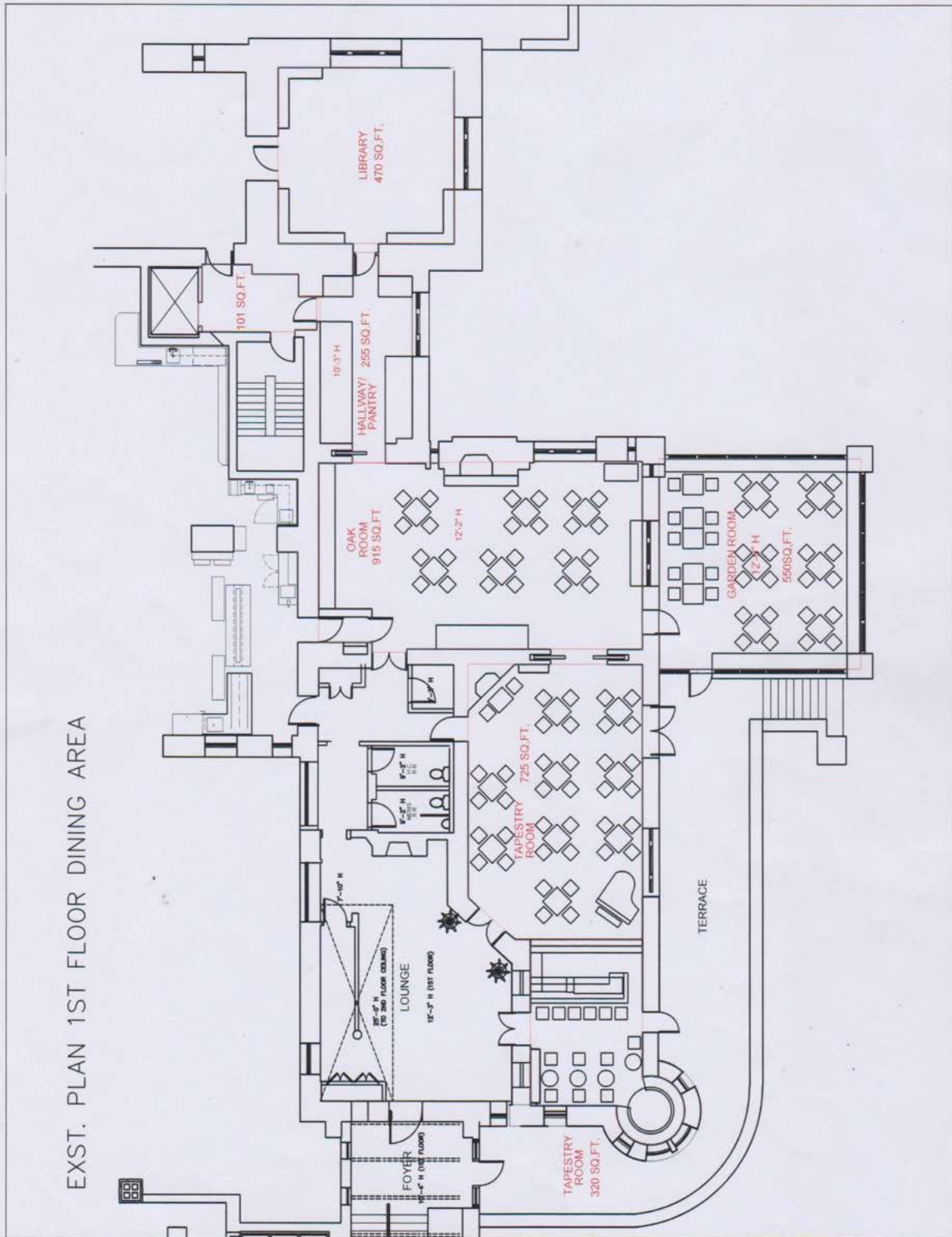




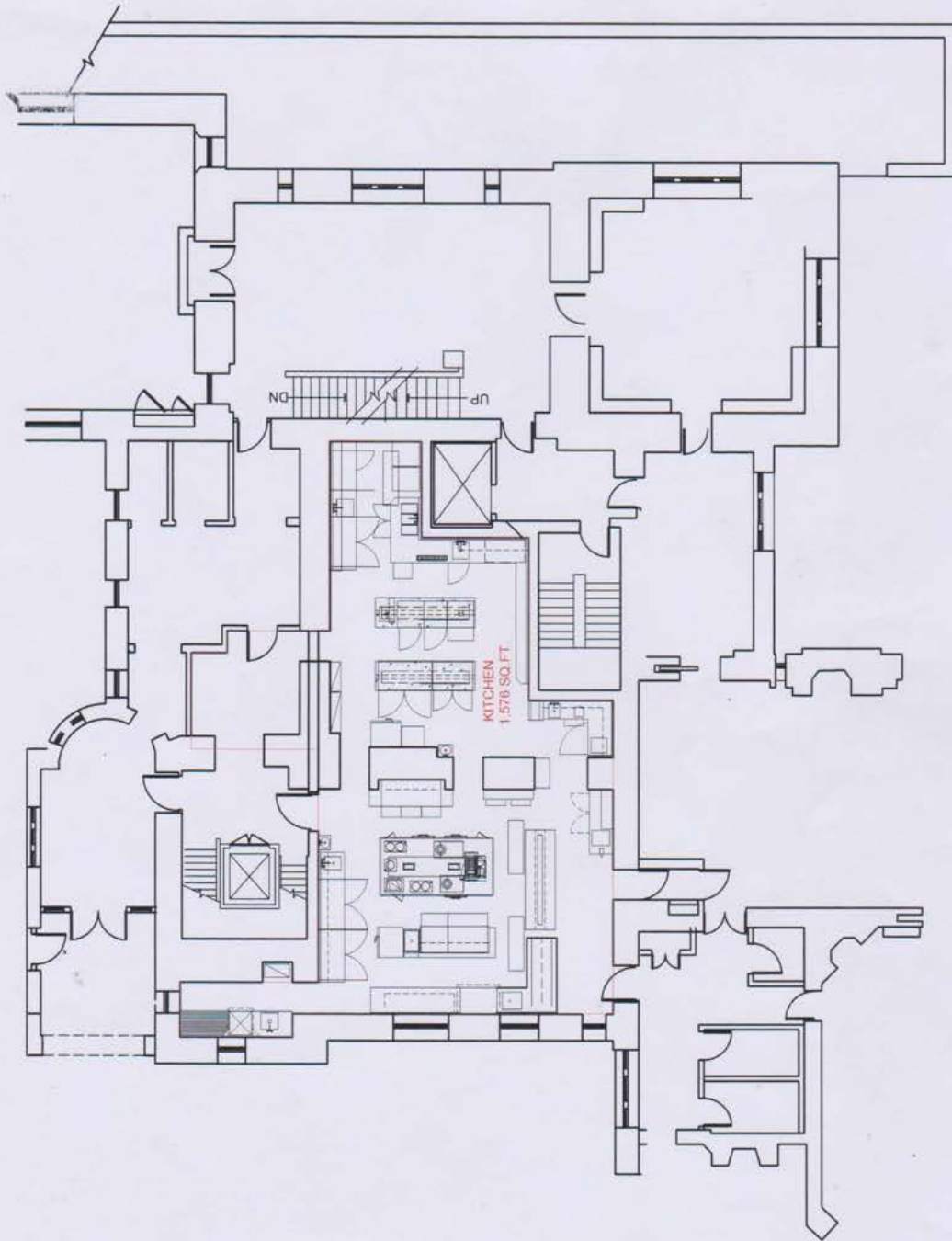
Oversized French Top Cooking Areas

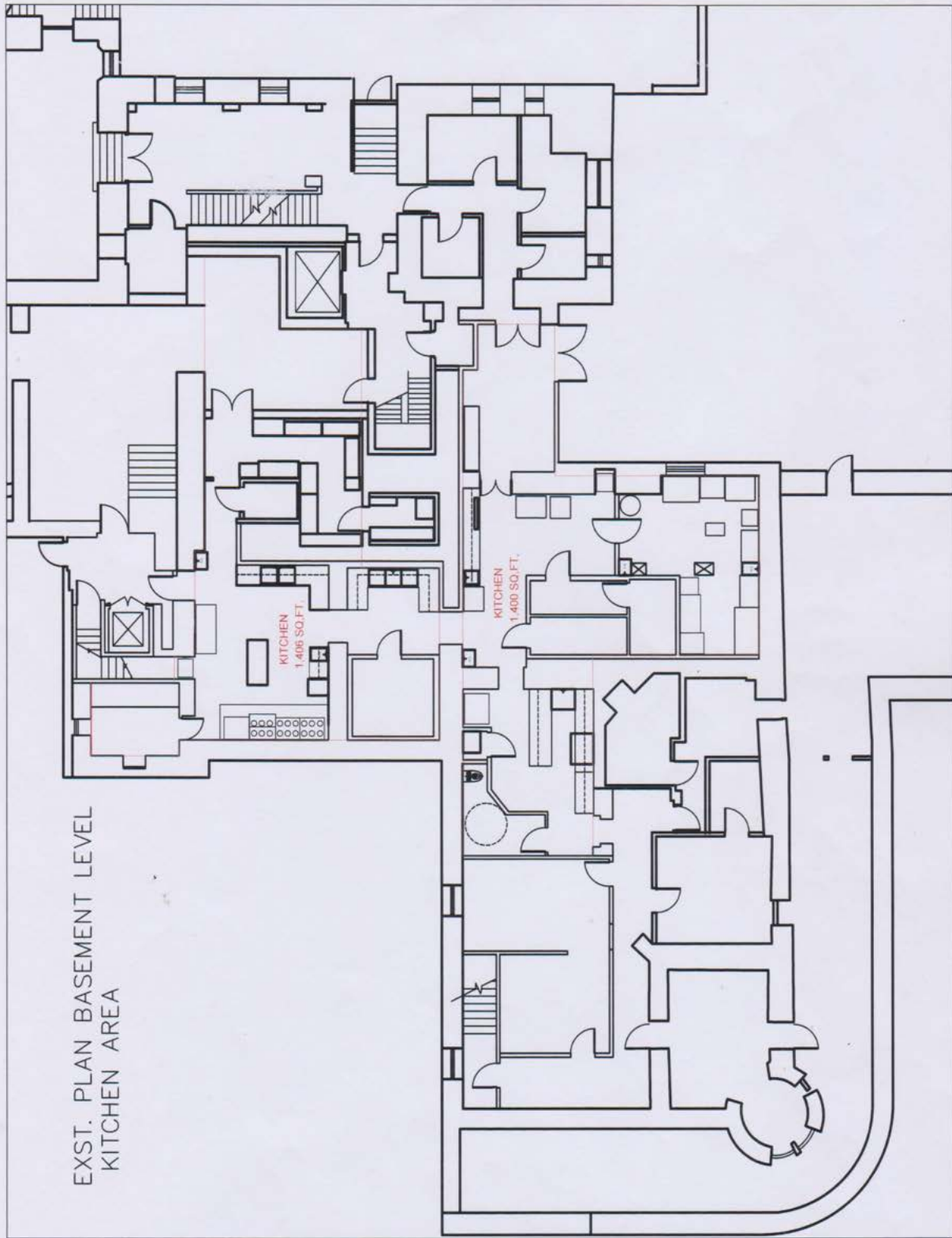


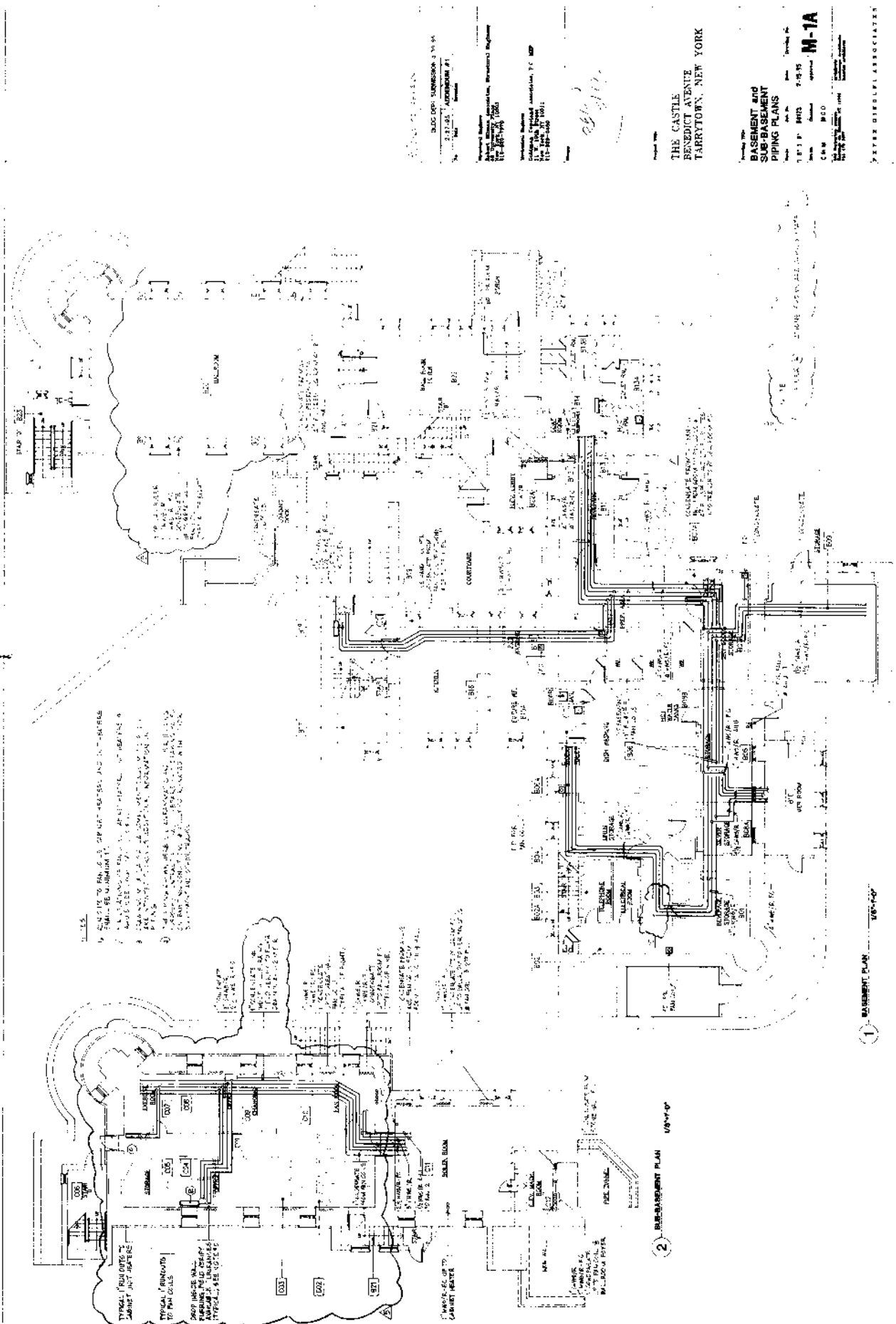
EXST. PLAN 1ST FLOOR DINING AREA



EXST. PLAN 1ST FLOOR KITCHEN AREA







- 1) CONDENSATE FROM STEAM HEATERS TO BE RE-CIRCULATED TO BOILER ROOM. SEE M-1A FOR DETAILS.
- 2) CONDENSATE FROM STEAM HEATERS TO BE RE-CIRCULATED TO BOILER ROOM. SEE M-1A FOR DETAILS.
- 3) CONDENSATE FROM STEAM HEATERS TO BE RE-CIRCULATED TO BOILER ROOM. SEE M-1A FOR DETAILS.
- 4) CONDENSATE FROM STEAM HEATERS TO BE RE-CIRCULATED TO BOILER ROOM. SEE M-1A FOR DETAILS.

- 1) CONDENSATE FROM STEAM HEATERS TO BE RE-CIRCULATED TO BOILER ROOM. SEE M-1A FOR DETAILS.
- 2) CONDENSATE FROM STEAM HEATERS TO BE RE-CIRCULATED TO BOILER ROOM. SEE M-1A FOR DETAILS.
- 3) CONDENSATE FROM STEAM HEATERS TO BE RE-CIRCULATED TO BOILER ROOM. SEE M-1A FOR DETAILS.
- 4) CONDENSATE FROM STEAM HEATERS TO BE RE-CIRCULATED TO BOILER ROOM. SEE M-1A FOR DETAILS.

THE CASTLE
BENEDICT AVENUE
TARRYTOWN, NEW YORK

PROJECT NO. 100-100
DATE: 10-1-55
DRAWN BY: J. J. ...

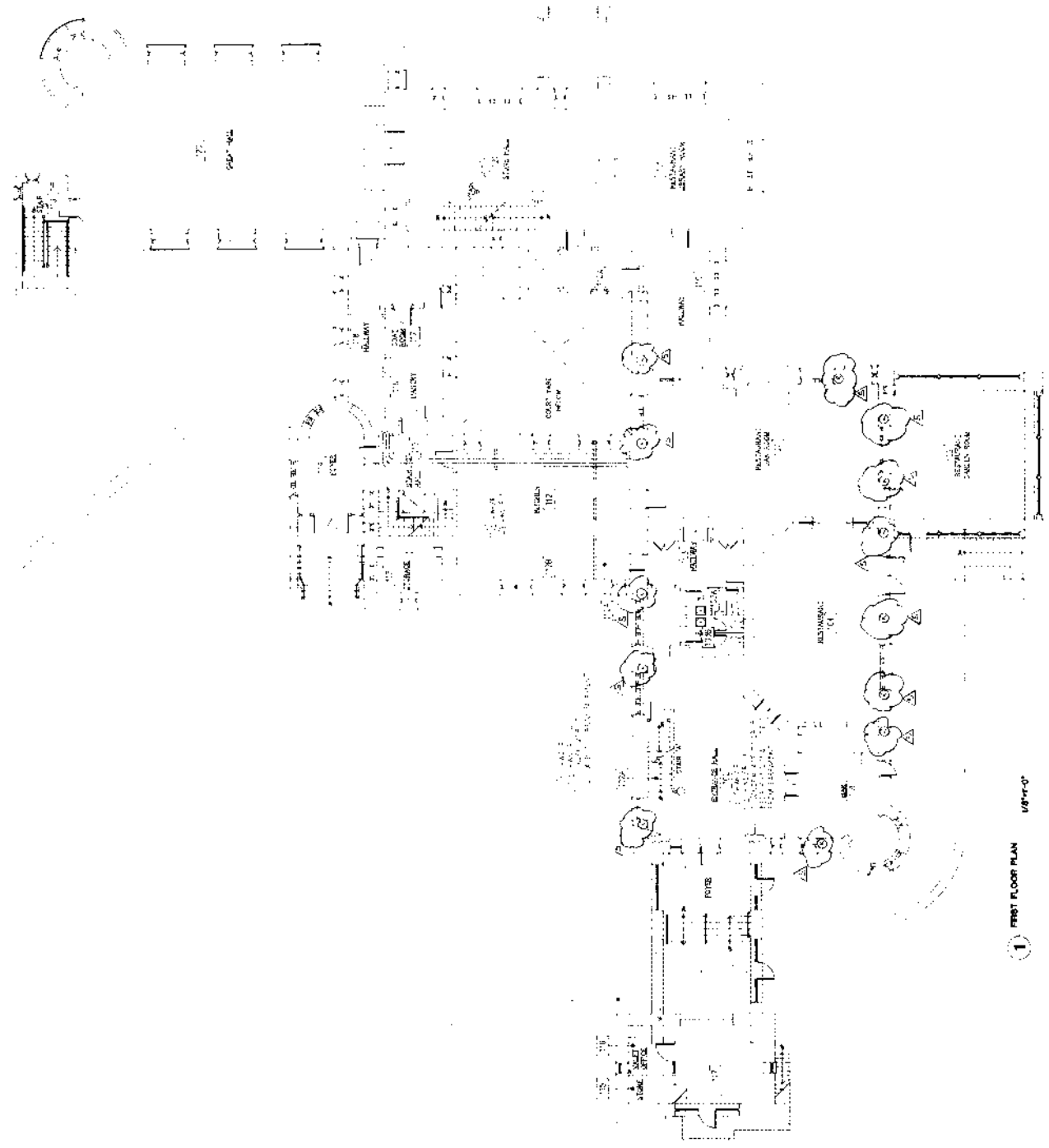
THE CASTLE
BENEDICT AVENUE
TARRYTOWN, NEW YORK

BASEMENT and
SUB-BASEMENT
PIPING PLANS
M-1A

JOHN J. ... ASSOCIATES

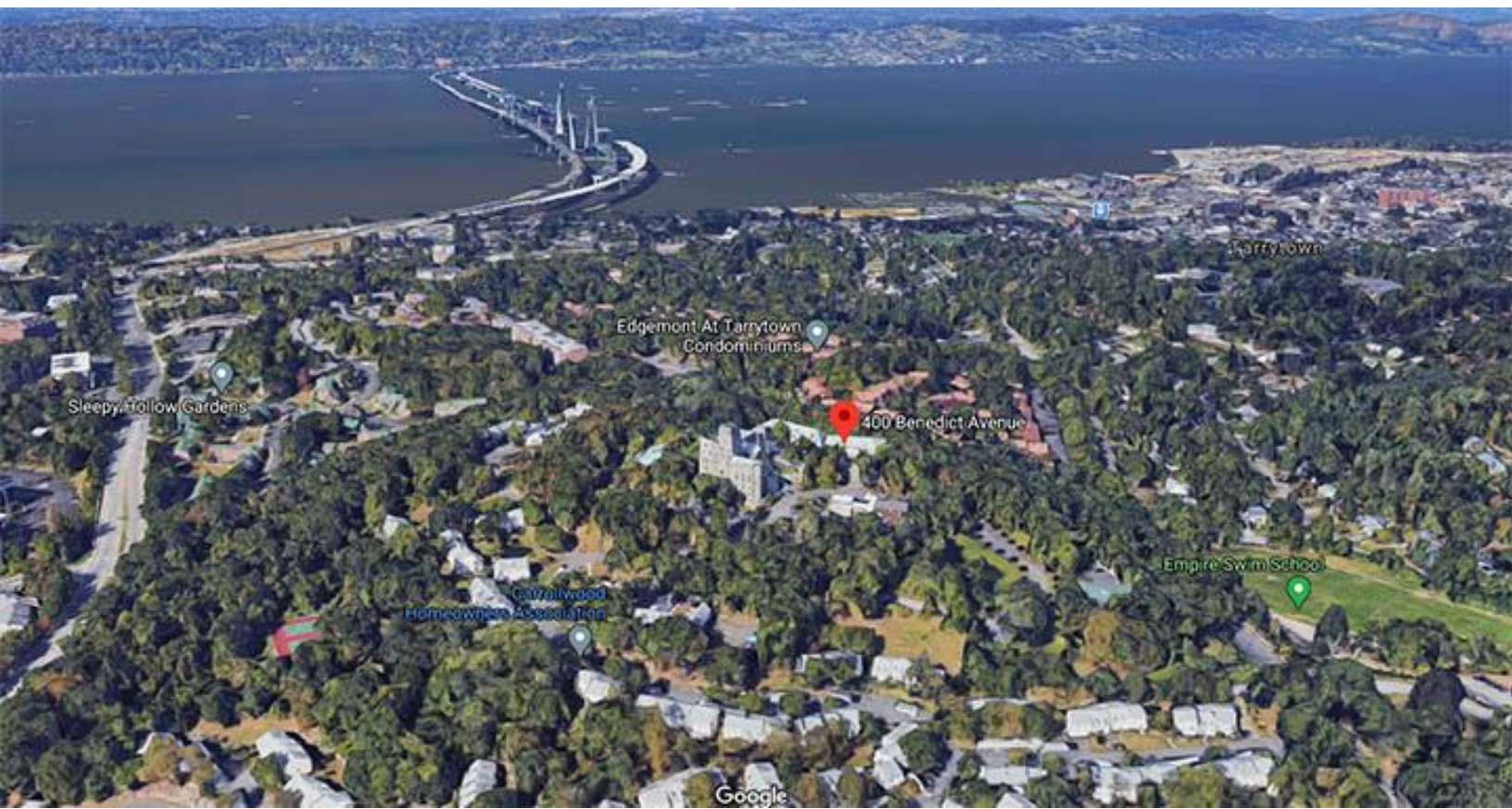
2) SUB-BASEMENT PLAN 1/8" = 1'-0"

1) BASEMENT PLAN 1/8" = 1'-0"

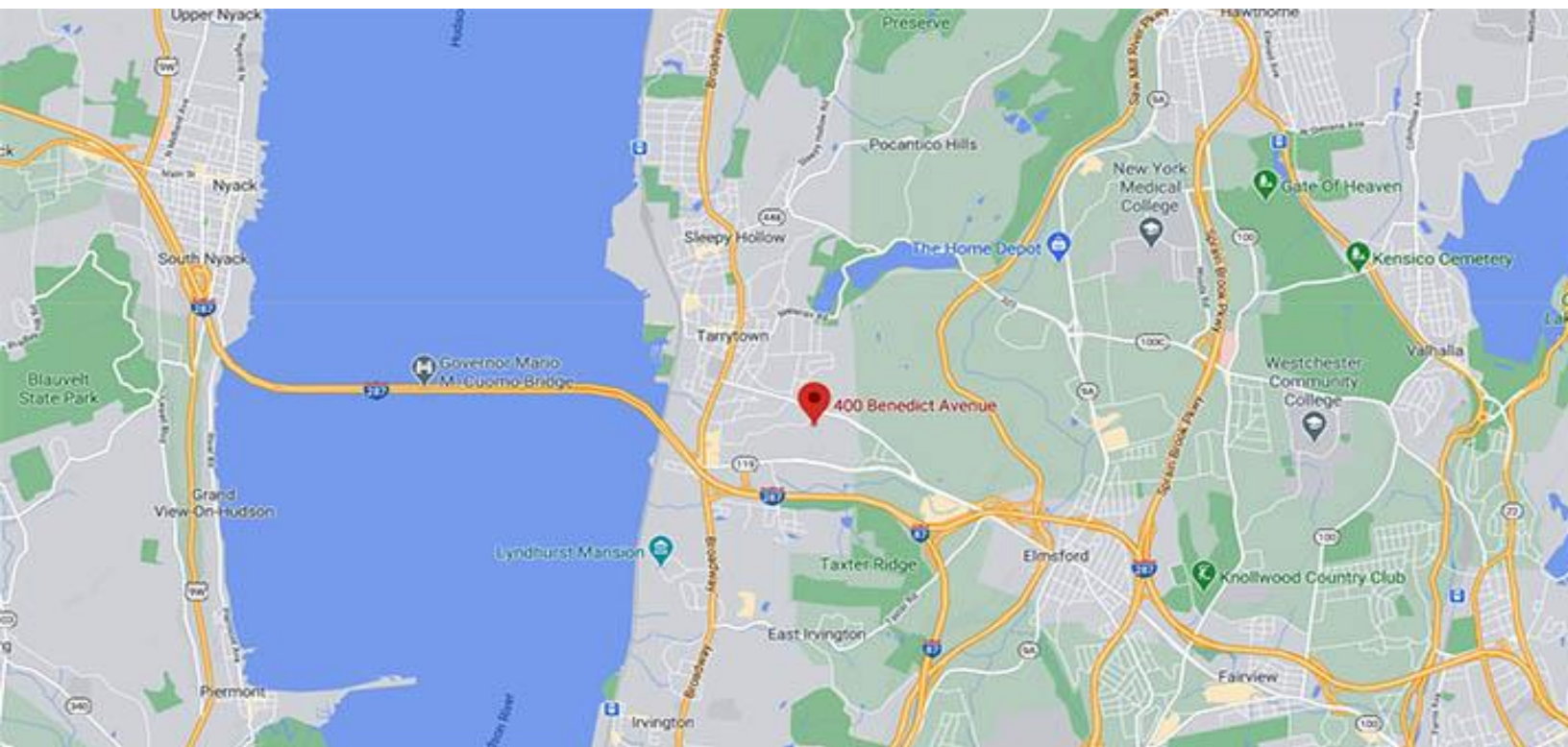


PROJECT NO. 100-100-100-100
 PROJECT NAME: THE CASTLE
 PROJECT ADDRESS: BENEDICT AVENUE, TARRYTOWN, NEW YORK
 ARCHITECT: [Faint text]
 DATE: [Faint text]
 SCALE: [Faint text]
 SHEET NO. M-2A
 TOTAL SHEETS: [Faint text]

1 FIRST FLOOR PLAN 1/8"=1'-0"



Conveniently Located Near NYS Thruway, I-287 & Governor Mario Cuomo (Tappan Zee) Bridge





For Private Showing Call:
Paul G. W. Fetscher CCIM, SCLS
Great American Brokerage
(516) 889-7200 Paul@RestaurantExpert.com
www.RestaurantExpert.com
Licensed Real Estate Broker

All information is from sources deemed reliable.
Offerings are made subject to errors, omissions,
prior acceptance and withdrawal without notice

Please Be Discreet
Do Not Speak to Anyone
On Premises



